


Magnify CT Data

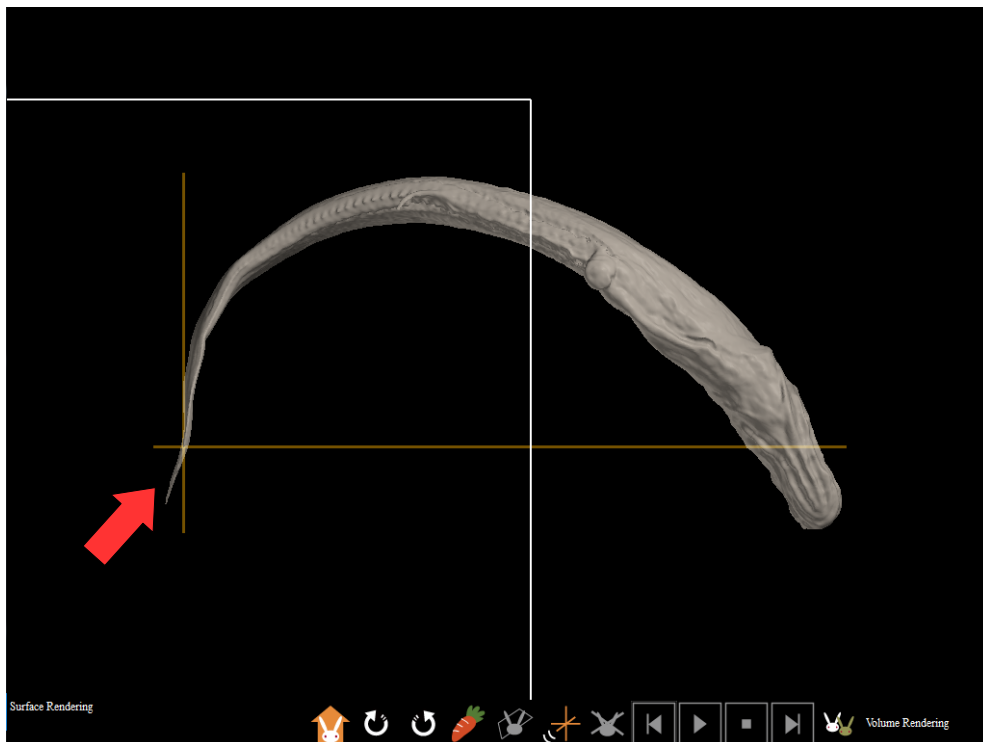
For v1.36

Magnify CT data or change rotation center.

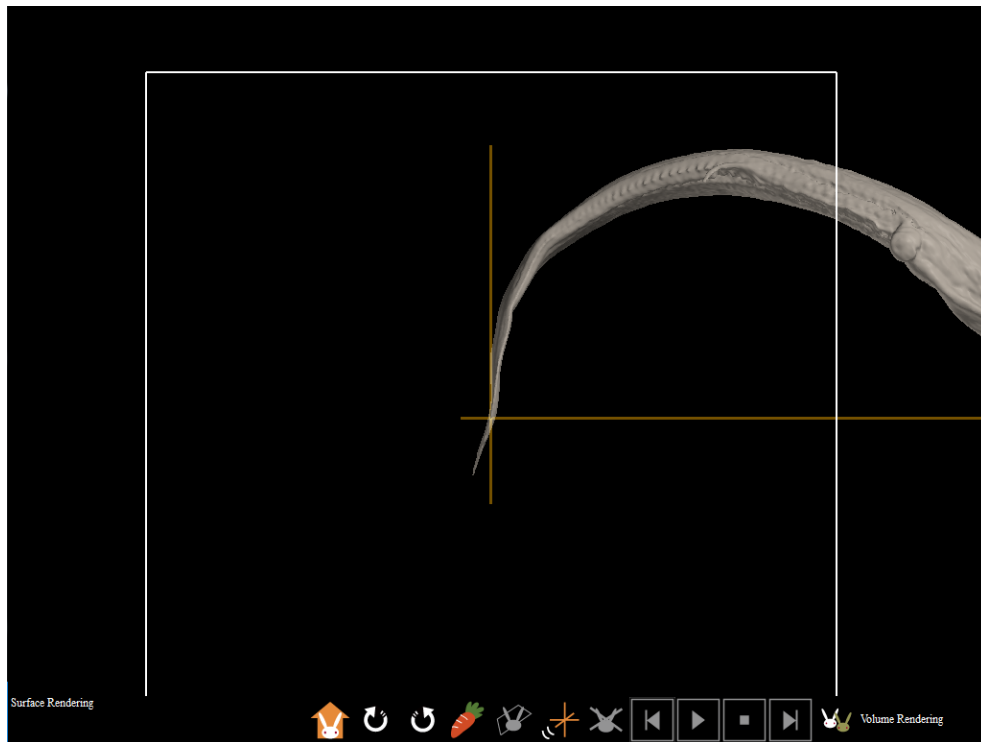
After object is drawn, click  at the bottom.



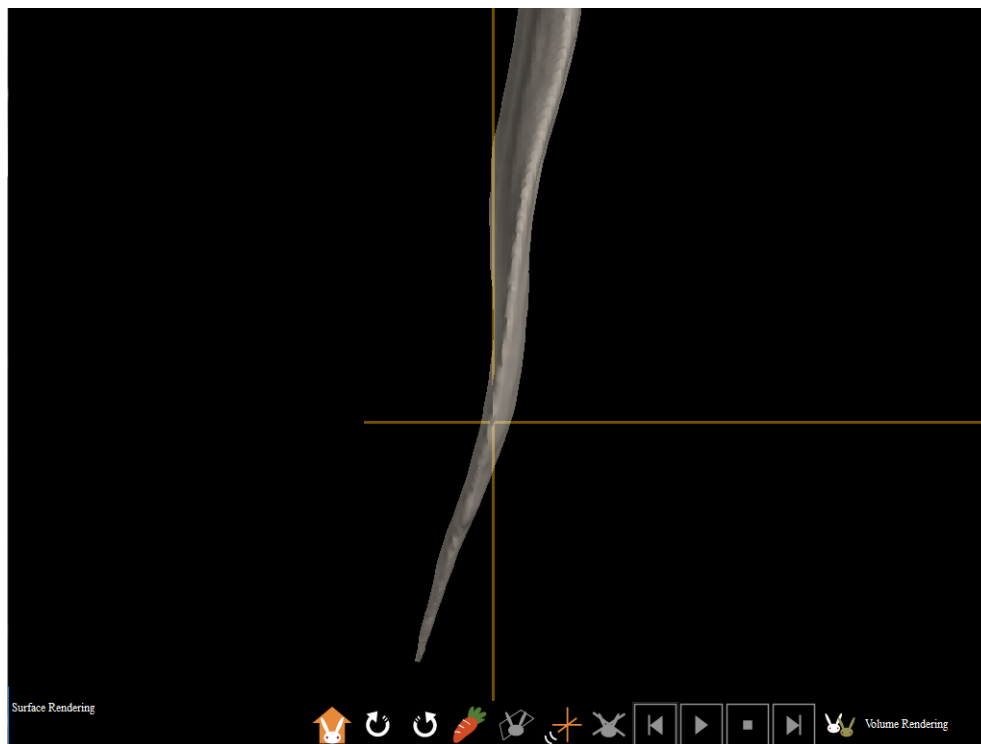
Click new rotation center (red arrow).



Dragging the Object with right mouse button pressed, move new rotation center to the center of the screen.



Magnify the object by rotating mouse wheel.



Now the object is magnified and rotates around the new rotation center.

