

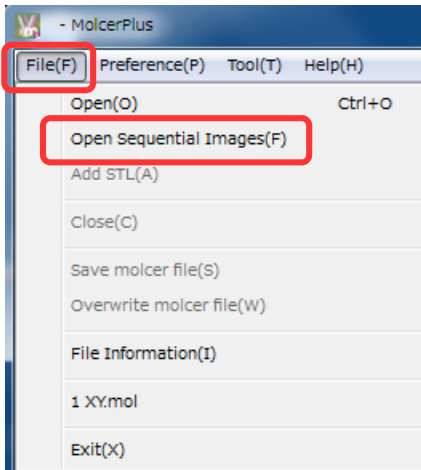
Dispose CT data

For v1.36

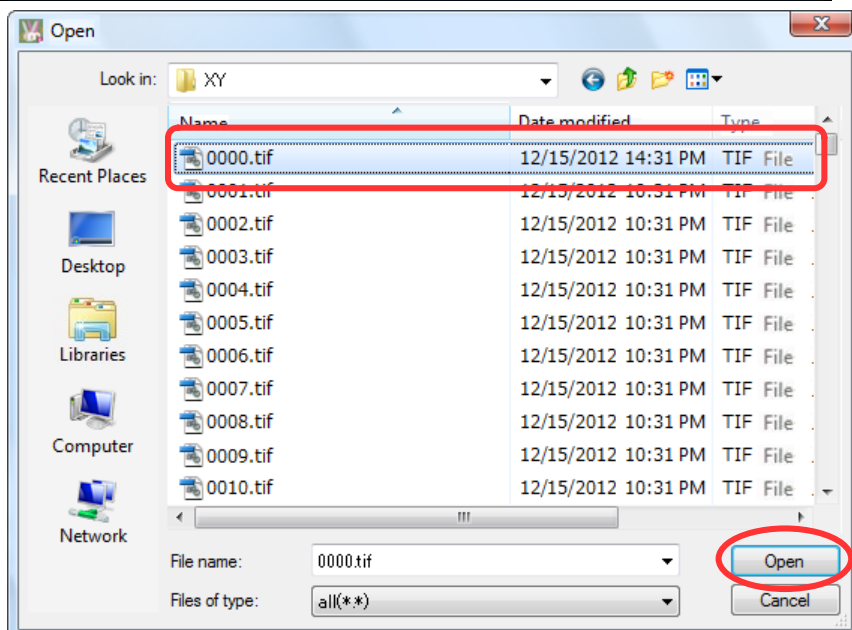
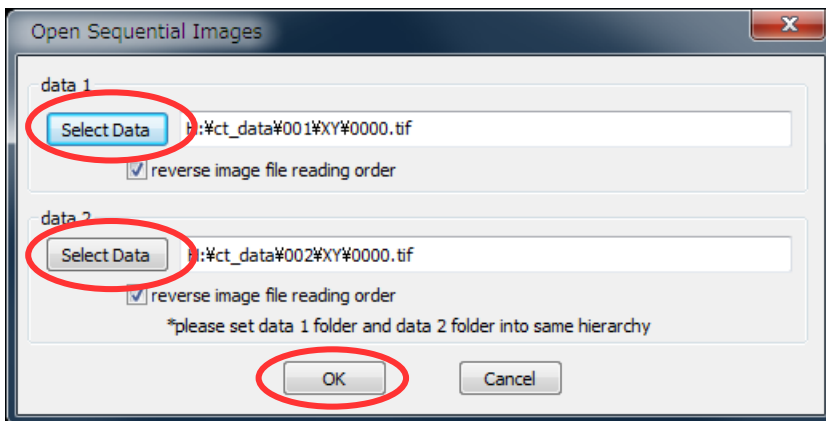
Reconstruct two 3D models from sectional image sequences at the same time and show them alongside each other.

Open Sequential Images

Select "File (F)" > "Open Sequential Images (F)" in menu bar.



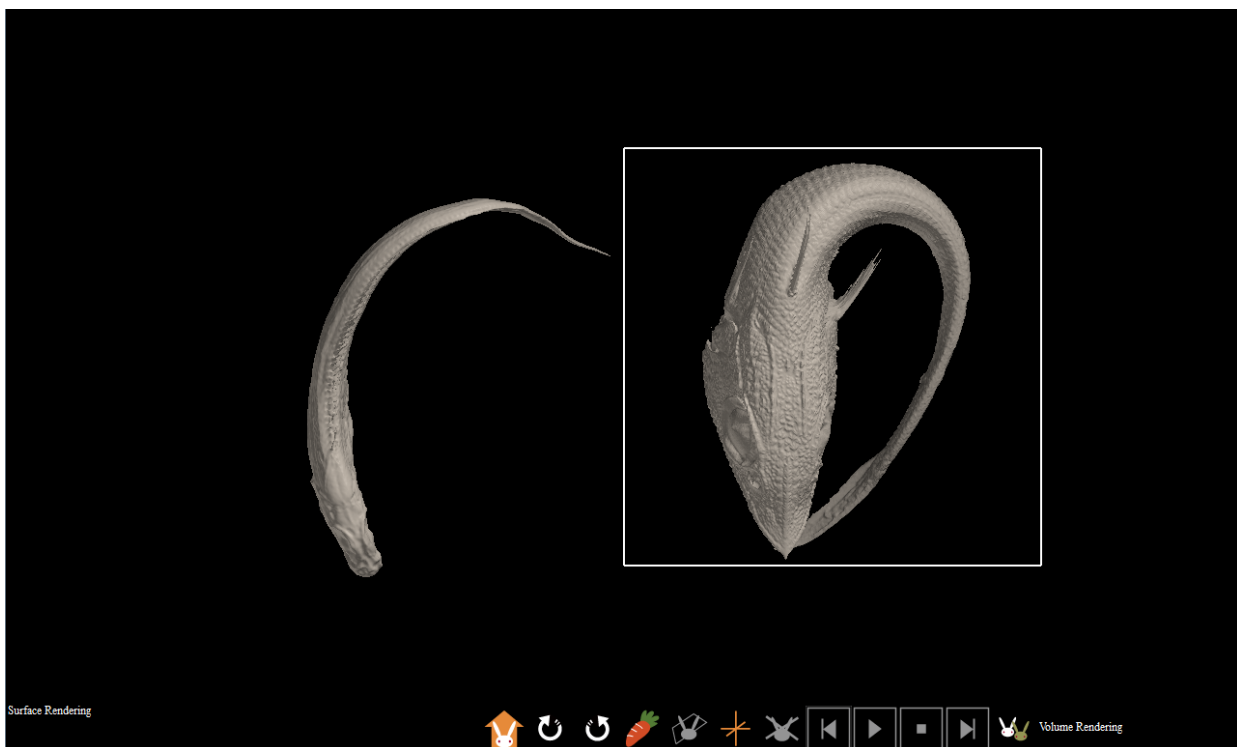
Press each "Select Data" button of "data 1" and "data 2", and choose one of each sequential images, then click "OK".



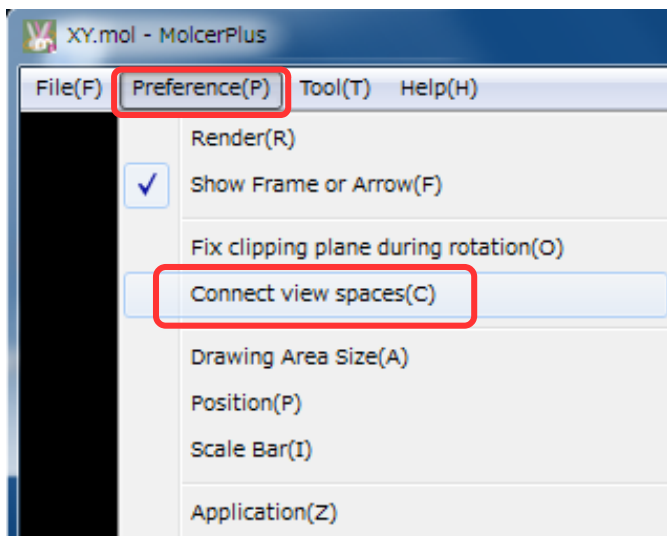
"Data 1" is drawn right and "data 2" is drawn left.



Select data by click, adjust direction by rotation and rendering type.



Select "Preference (P)" > "Connect view spaces (C)" in menu bar.



"Data 1 (right)" and "data 2 (left)" follows motion each other.
Now, you can see two data disposed in the same direction from any angle.

